

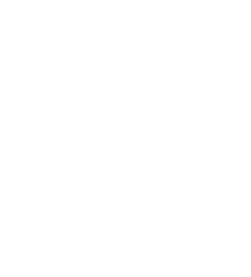
WOODARD  
DESIGN  
P.C.

1100 GRANBY STREET  
SUITE 201  
NORFOLK, VIRGINIA 23510

TEL. (757) 466-1400  
FAX (757) 466-5014

© COPYRIGHT 2009 WOODARD DESIGN, P.C.

**S P C**  
WOODWARD DESIGN, P.C.  
REGISTERED PROFESSIONAL ENGINEERS  
1501 COMMONWEALTH AVENUE, SUITE 100  
NORFOLK, VIRGINIA 23510-1000 (757) 466-1400  
FAX (757) 466-5014  
WWW.WOODARDDESIGN.COM



**YMCA OF SOUTH  
HAMPTON ROADS**

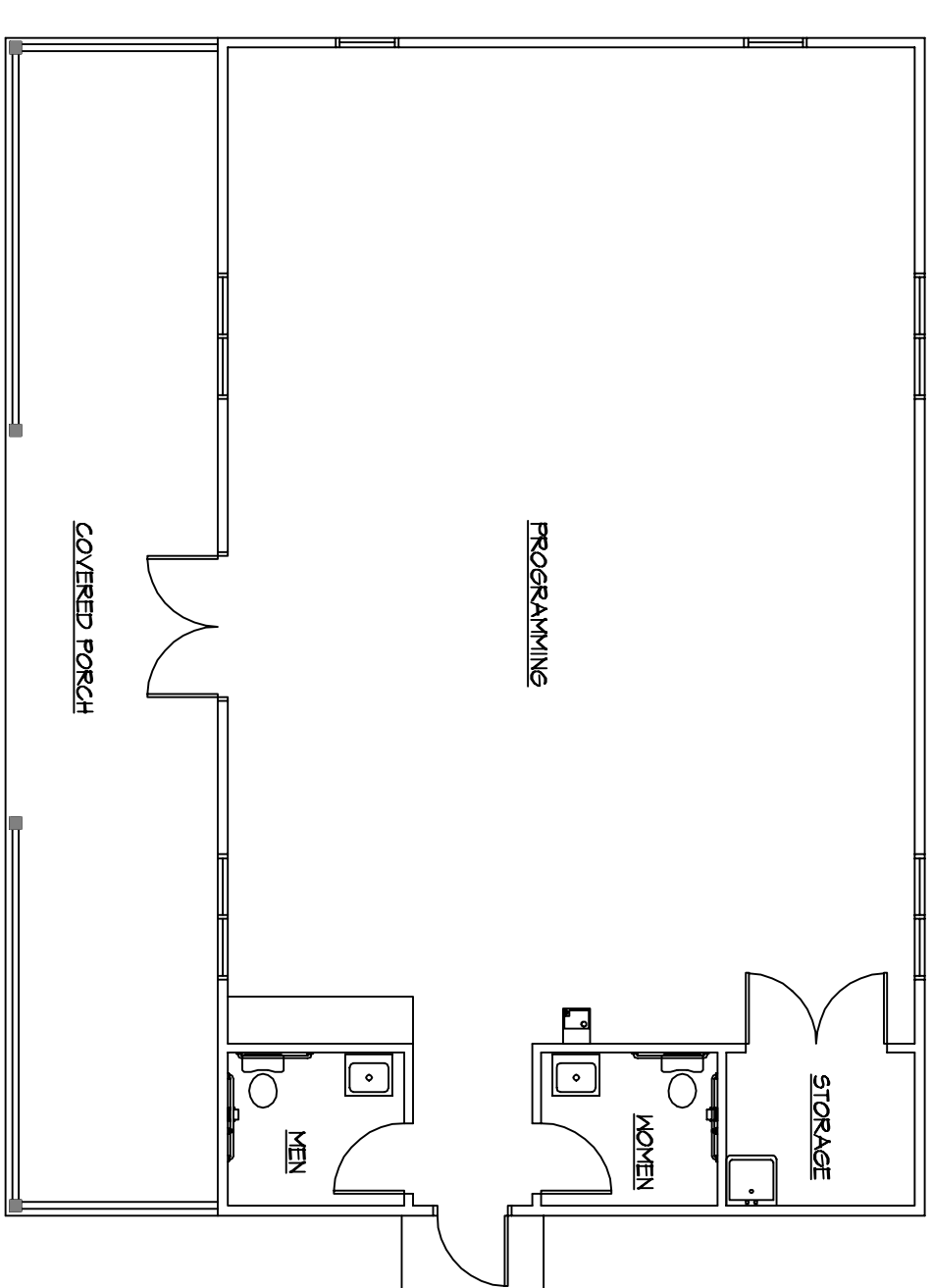
312 BUTE STREET  
NORFOLK, VIRGINIA 23510

**NEW  
PROGRAM LODGE  
FOR  
NORTHWEST RIVER  
YMCA DAY CAMP**

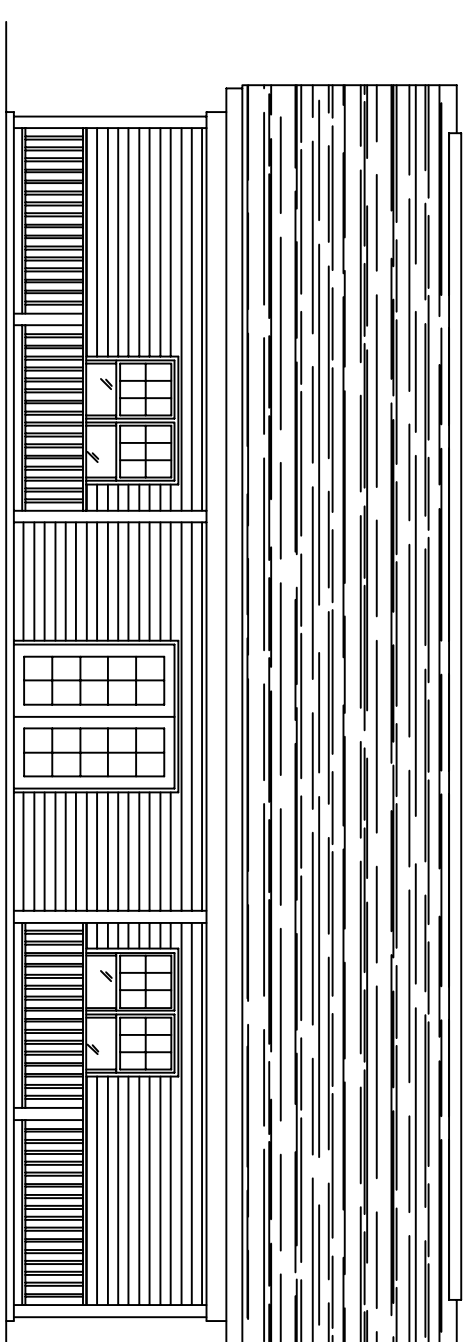
FLOOR PLAN & ELEVATIONS

DATE: 04/14/09

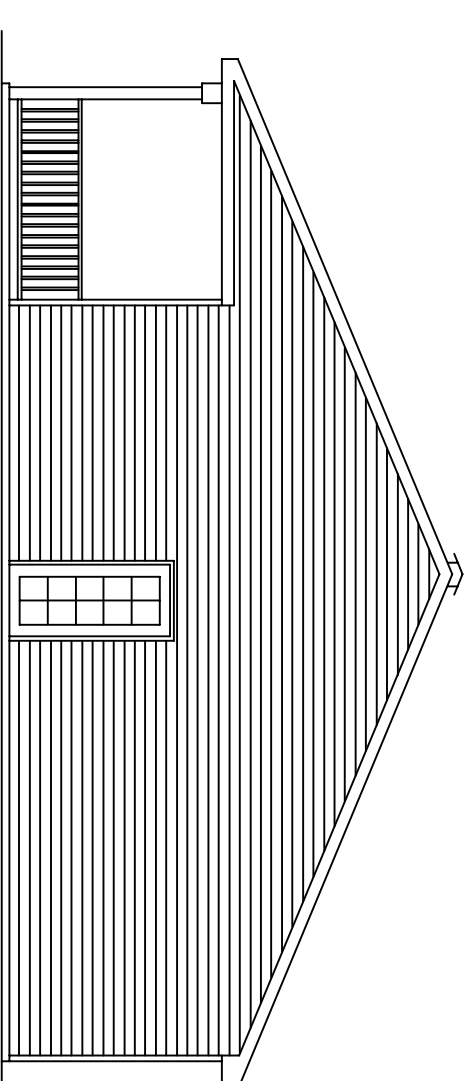
JOB NO. 09011.03



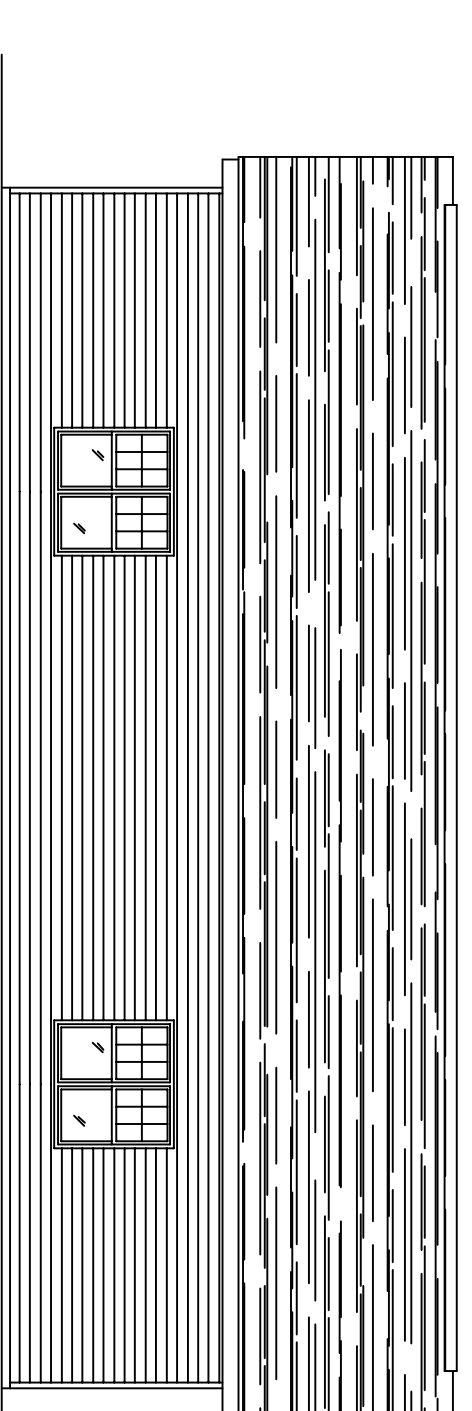
FLOOR PLAN - PROGRAM LODGE  
1/8" = 1'-0"



FRONT ELEVATION  
1/8" = 1'-0"



RIGHT SIDE ELEVATION  
1/8" = 1'-0"



REAR ELEVATION  
1/8" = 1'-0"